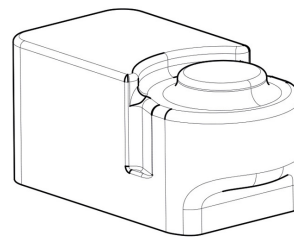


Product Code

9901/X97

Actuator Accessory



Product use

Auxiliary contacts are accessories to be used with servo motors. They are double switching contacts and can be set to any position between 0° and 90°.

They can be used to remote the motor state and consequently the valve it is assembled on.

Product details

Pour servomoteurs 9700/RA69720/RA29720/RA6

Emballage 1

Notes