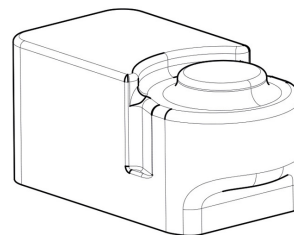


Product Code

**9901/X97**

Actuator Accessory



### Product use

Auxiliary contacts are accessories to be used with servo motors. They are double switching contacts and can be set to any position between 0° and 90°.

They can be used to remote the motor state and consequently the valve it is assembled on.

### Product details

**Pour servomoteurs** 9700/RA69720/RA29720/RA6

**Emballage** 1

### Notes