

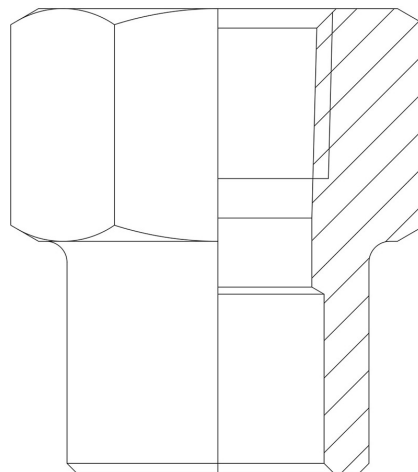
## Product Code

# 3035/6

Safety Valve Inlet Union

3/4"NPTx28mm ODS

PS = 150 bar



**G O GREEN**

R744 • NATURAL REFRIGERANT

**P OLYHEDRA**

**C L ASSIC**

## Product use

Standard fittings in series 3035 allow the assembly of: safety valves, bursting discs, shut-off valves and switching valves near the equipment to be protected under pressure in the system.

The fittings have been designed to be used on a copper branch or directly on the main copper line, making a hole.

## Product details

Connections NPT 3/4"

Connections ODS Ø [mm] 28

PS [bar] 150

Package pcs 30