

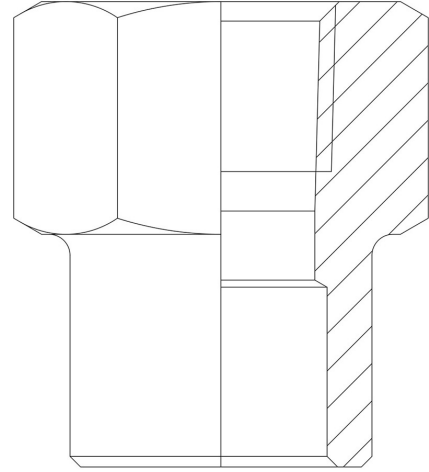
Product Code

3035/3

Safety Valve Inlet Union

3/8"NPTx18mm ODS

PS = 150 bar



G O GREEN

R744 • NATURAL REFRIGERANT

P OLY HEDRA

C L ASSIC

Product use

Standard fittings in series 3035 allow the assembly of: safety valves, bursting discs, shut-off valves and switching valves near the equipment to be protected under pressure in the system.

The fittings have been designed to be used on a copper branch or directly on the main copper line, making a hole.

Product details

Connections NPT	3/8"
Connections ODS Ø [mm]	18
PS [bar]	150
Package pcs	100