

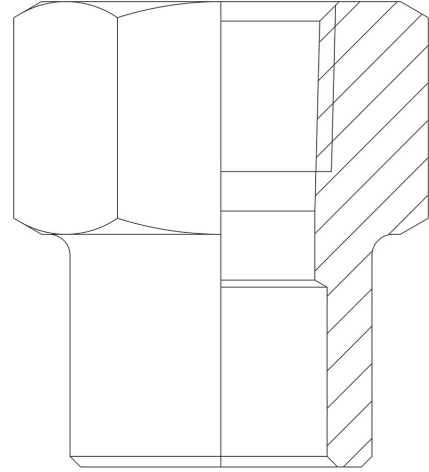
## Product Code

# 3035/4

Safety Valve Inlet Union

1/2"NPTx22mm ODS

PS = 150 bar



**G O G R E E N**

R744 • NATURAL REFRIGERANT

**P O L Y H E D R A**

**C L A S S I C**

## Product use

Standard fittings in series 3035 allow the assembly of: safety valves, bursting discs, shut-off valves and switching valves near the equipment to be protected under pressure in the system.

The fittings have been designed to be used on a copper branch or directly on the main copper line, making a hole.

## Product details

Connections NPT	1/2"
Connections ODS Ø [mm]	22
PS [bar]	150
Package pcs	60