

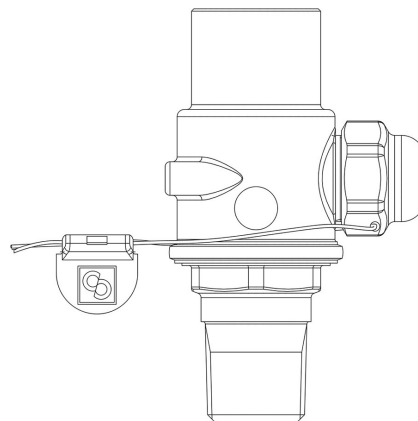
Product Code

**3064N/44**

Ball Shut Off Valve

1/2" NPT

PS = 80 bar



**P**  **LYHEDRA**

### Product use

The shut-off valves series 3064N, installed between the equipment to be protected and the safety valve, allow the valve to be removed for periodic inspection or replacement without blowing off all the refrigerant from a section of the system.

Accessories for use with the following ASHRAE 34:2019 refrigerants, Class A1, A2L, or A3:

HFC (R134A, R32, R404A, R407C, R410A, R507)

HFO (R1234YF, R1234ZE)

HFO + HFC (R448A, R449A, R450A, R452A, R452B, R454A, R454B, R454C, R455A, R513A, R515A, R515B)

HC (R290, R600, R600A, R1270)

### Product details

Attacchi NPT 1/2"

Kv [m<sup>3</sup>/h] 10

PS [bar] 80

TS[°C] min. -40

TS[°C] max. +150

Confezione n° pz 24