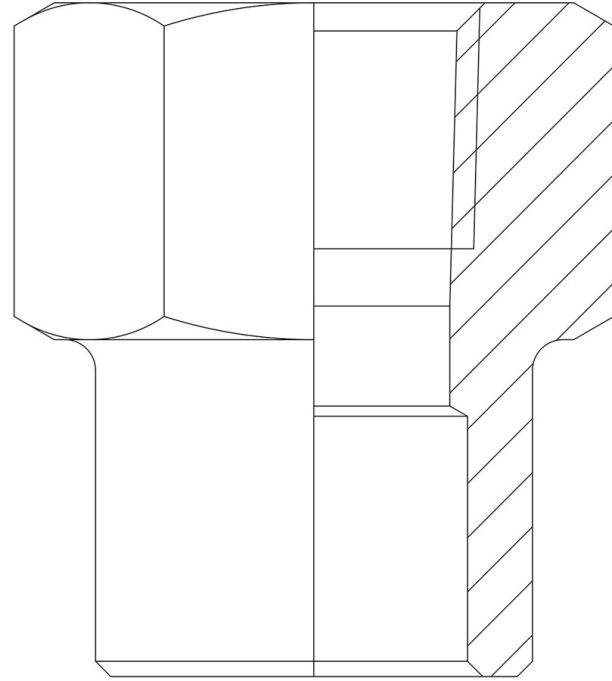


Product Code

3035/8

Safety Valve Inlet Union
1"NPTx35mm ODS
PS = 120 bar



GO GREEN

STABILIZZATI E CONDIZIONATI

POLYHEDRA

CLASSIC

Product use

Standard fittings in series 3035 allow the assembly of: safety valves, bursting discs, shut-off valves and switching valves near the equipment to be protected under pressure in the system.

The fittings have been designed to be used on a copper branch or directly on the main copper line, making a hole.

Product Details

Connections NPT	1"
Connections ODS Ø [mm]	35
PS [bar]	120
Package pcs	20