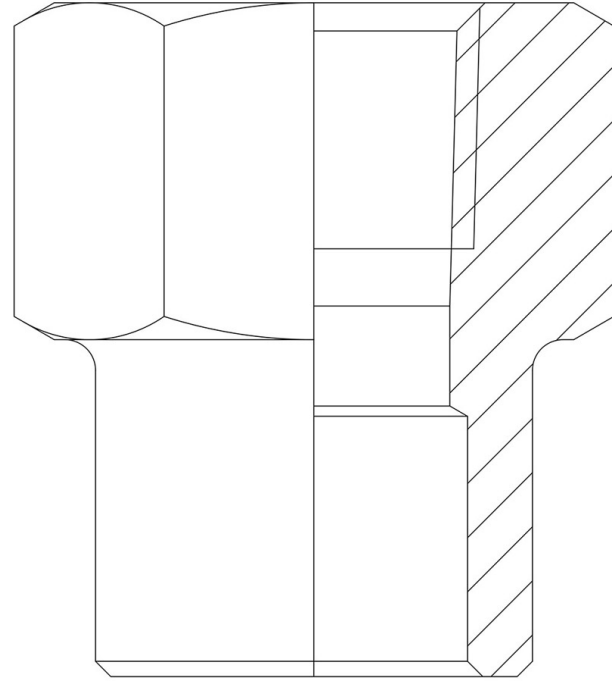


Product Code

3035/10

Safety Valve Inlet Union

1.1/4"NPTx42mm ODS
PS = 120 bar



GO GREEN

STABILIZZAZIONE DEL FLUIDO

POLYHEDRA

CLASSIC

Product use

Standard fittings in series 3035 allow the assembly of: safety valves, bursting discs, shut-off valves and switching valves near the equipment to be protected under pressure in the system.

The fittings have been designed to be used on a copper branch or directly on the main copper line, making a hole.

Product Details

Connections NPT 1.1/4"

Connections ODS Ø [mm] 42

PS [bar] 120

Package pcs 6