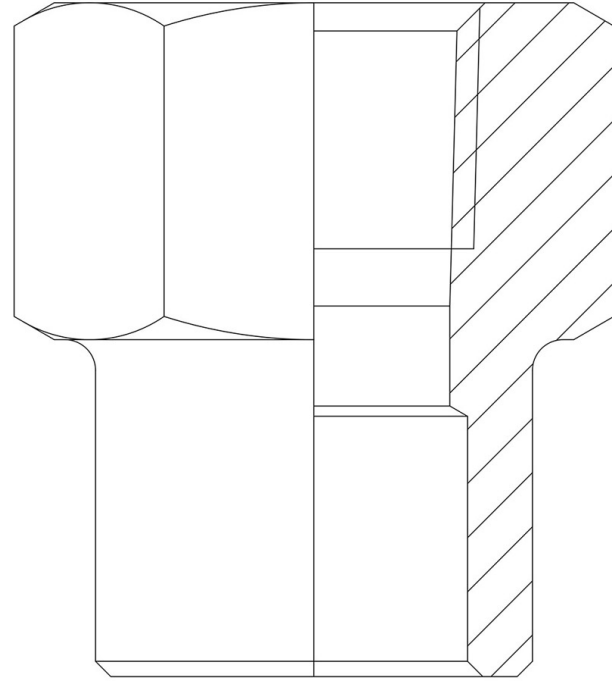


## Product Code

# 3035/3

Safety Valve Inlet Union  
3/8"NPTx18mm ODS<br>PS = 150 bar



GO GREEN

STABILIZZAZIONE DEL FLUIDO

POLYHEDRA

CLASSIC

## Product use

Standard fittings in series 3035 allow the assembly of: safety valves, bursting discs, shut-off valves and switching valves near the equipment to be protected under pressure in the system.

The fittings have been designed to be used on a copper branch or directly on the main copper line, making a hole.

## Product Details

Connections NPT 3/8"

Connections ODS Ø [mm] 18

PS [bar] 150

Package pcs 100