

Product Code

9900/X60

Nut

1/2" SAE FLARE
PS = 140 bar

Impiego

Accessori per impieghi con i seguenti refrigeranti, classificati A1, A2L, A3 secondo la norma ASHRAE 34: 2019:

HCFC (R22)

HFC (R134a, R32, R404A, R407C, R410A, R507)

HFO e miscele HFC/HFO (R1234ze, R1234yf, R448A, R449A, R450A, R452A, R513A, R515A, R515B)

HC (R290, R600, R600a, R1270)

R744

Dettagli Prodotto

Nr. Catalogo 9900/X60

Posizione componente 1

Attacchi SAE Flare 1/2"

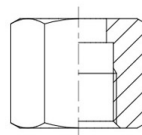
Attacchi ODS Ø [in.]

ODS Ø [mm]

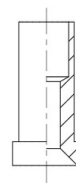
PS[bar] 140

Confezione n° pz 50

POS.1



POS.2



POS.3

